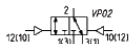
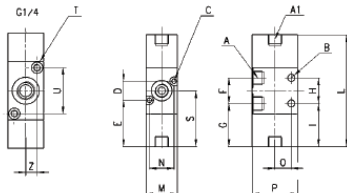


3/2 way valve, G1/8 or G1/4, bistable



ELECTROSÓN

DIMENSIONS

Mod.	Mounting	Function	Flow rate (Nl/min)	Min. pilot pressure (bar)	A	A1	B	C	D	E	F	G	H	I	L	M	N	O	P	S	T	U	Z
338-033	in line	3/2 NC	700	1,5	G1/8	G1/8	5	-	-	-	18	30,4	18	30,4	78,8	22	-	11,5	32	41,7	-	-	
338L-033	on manifold	3/2 NC	700	1,5	G1/8	G1/8	5	3,2	13,4	32,7	18	30,4	-	30,4	78,8	22	17,4	-	32	41,7	-	-	
334-033	in line	3/2 NC	1300	2,5	G1/4	-	4,1	-	-	-	22	29,7	22	29,7	81,3	25	-	16	40	40,7	M5	-	