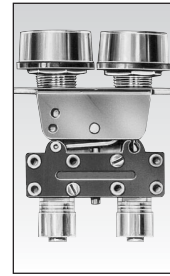
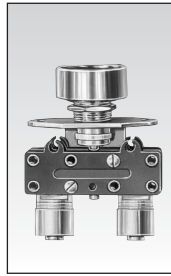


# Manual Control Valves for 1/2" (12mm) hole size



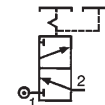
**1**

## Part Number

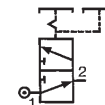
Features		Round push button	Round double push button
Version	NC	black	—
		red	—
		black/red	—
NO		black	<b>81 733 511</b>
		red	—
		black/red	—

## Symbol

NC



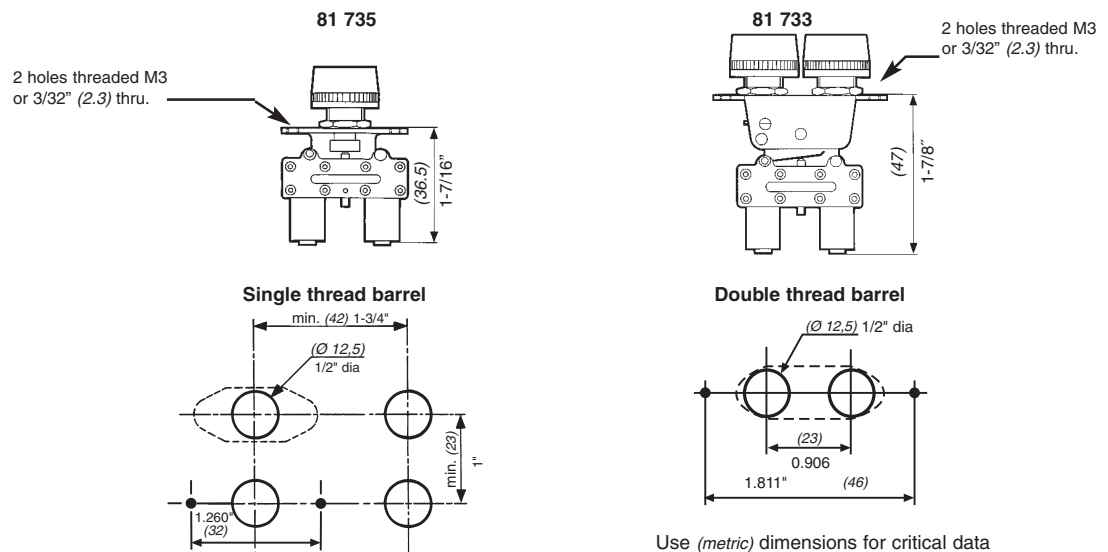
NO



## Characteristics

Operating Pressure	PSI (bar)	30 > 120 (2 > 8)	30 > 120 (2 > 8)
Internal orifice	inches (mm)	0.106" (2.7)	0.106" (2.7)
Flow @ 90 PSI (6 bar)	cfm (Nm <sup>3</sup> /h)	7 (200)	7 (200)
Valve	NC : black NO : grey	●	●
Operating force	lbs. (N)	2 > 4 (8 > 18)	2 > 4 (8 > 18)
Effective travel	inches (mm)	0.04 (1)	0.04 (1)
Fluid: dry or lubricated air		●	●
Push-in connection for semi-rigid tubing O.D. (NFE 49100)	inches (mm)	5/32" (4)	5/32" (4)
Operating temperature	°F (°C)	+20 > +120 (-5 > +50)	+20 > +120 (-5 > +50)
Mechanical life		1.5 million	1.5 million
Weight	grams	35	35

## Dimensions



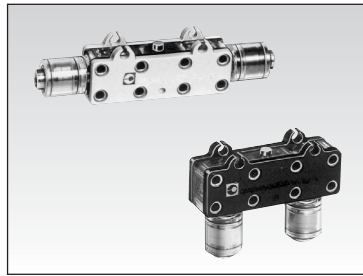
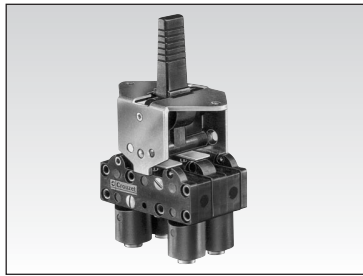
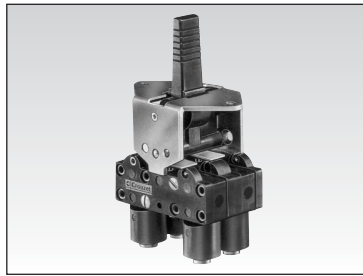
## Other Information

on request

Part Numbers : 81 702 011 / 511 - 81 715 012 - 81 716 011 / 012 - 81 731 011 / 511 - 81 733 011  
81 734 011 / 012 / 511 / 512 - 81 735 012 - 81 752 012 / 512

Products and specifications subject to change without notice.

Order/Technical Support – Tel: (800) 677-5311 / FAX: (800) 677-3865 / www.crouzet-usa.com



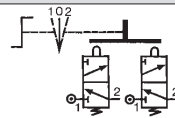
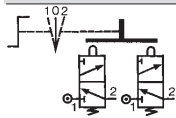
1

3 position manual return lever  
**81 716 511**  
**81 716 512**  
 —  
 —  
 —  
 —

3 position spring centered lever  
**81 715 511**  
**81 715 512**  
 —  
 —  
 —  
 —

horizontal output replacement valve  
**81 280 510**  
 —  
**81 280 010**  
 —  
 —

vertical output replacement valve  
**81 281 510**  
 —  
**81 281 010**  
 —  
 —



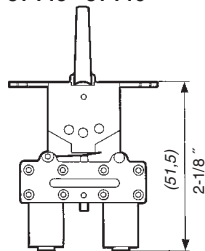
30 > 120 (2 > 8)  
 0.106" (2.7)  
 7 (200)  
 •  
 2 > 4 (8 > 18)  
 0.04 (1)  
 •  
 5/32" (4)  
 +20 >+120 (-5 >+50)  
 1.5 million  
 65

30 > 120 (2 > 8)  
 0.106" (2.7)  
 7 (200)  
 •  
 2 > 4 (8 > 18)  
 0.04 (1)  
 •  
 5/32" (4)  
 +20 >+120 (-5 >+50)  
 1.5 million  
 65

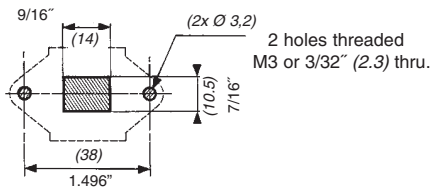
30 > 120 (2 > 8)  
 0.106" (2.7)  
 7 (200)  
 •  
 3 > 1/8 (15)  
 0.04 (1)  
 •  
 5/32" (4)  
 +20 >+120 (-5 >+50)  
 1.5 million  
 14

30 > 120 (2 > 8)  
 0.106" (2.7)  
 7 (200)  
 •  
 3 > 1/8 (15)  
 0.04 (1)  
 •  
 5/32" (4)  
 +20 >+120 (-5 >+50)  
 1.5 million  
 14

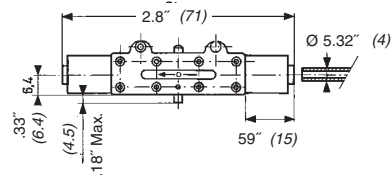
**81 715 - 81 716**



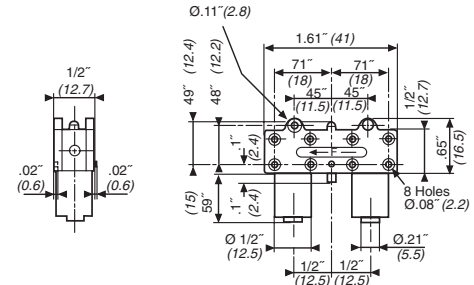
**Lever cut-out**



**81 280 010 - 81 280 510**



**81 281 010 - 81 281 510**



Use (metric) dimensions for critical data

**To order, specify:**

Standard product

**1** Part number

Standard product not stocked

Example: Round push button in black-81 735 511

5

Products and specifications subject to change without notice.

Order/Technical Support – Tel: (800) 677-5311 / FAX: (800) 677-3865 / www.crouzet-usa.com

