



USB TO SERIAL CONVERTER

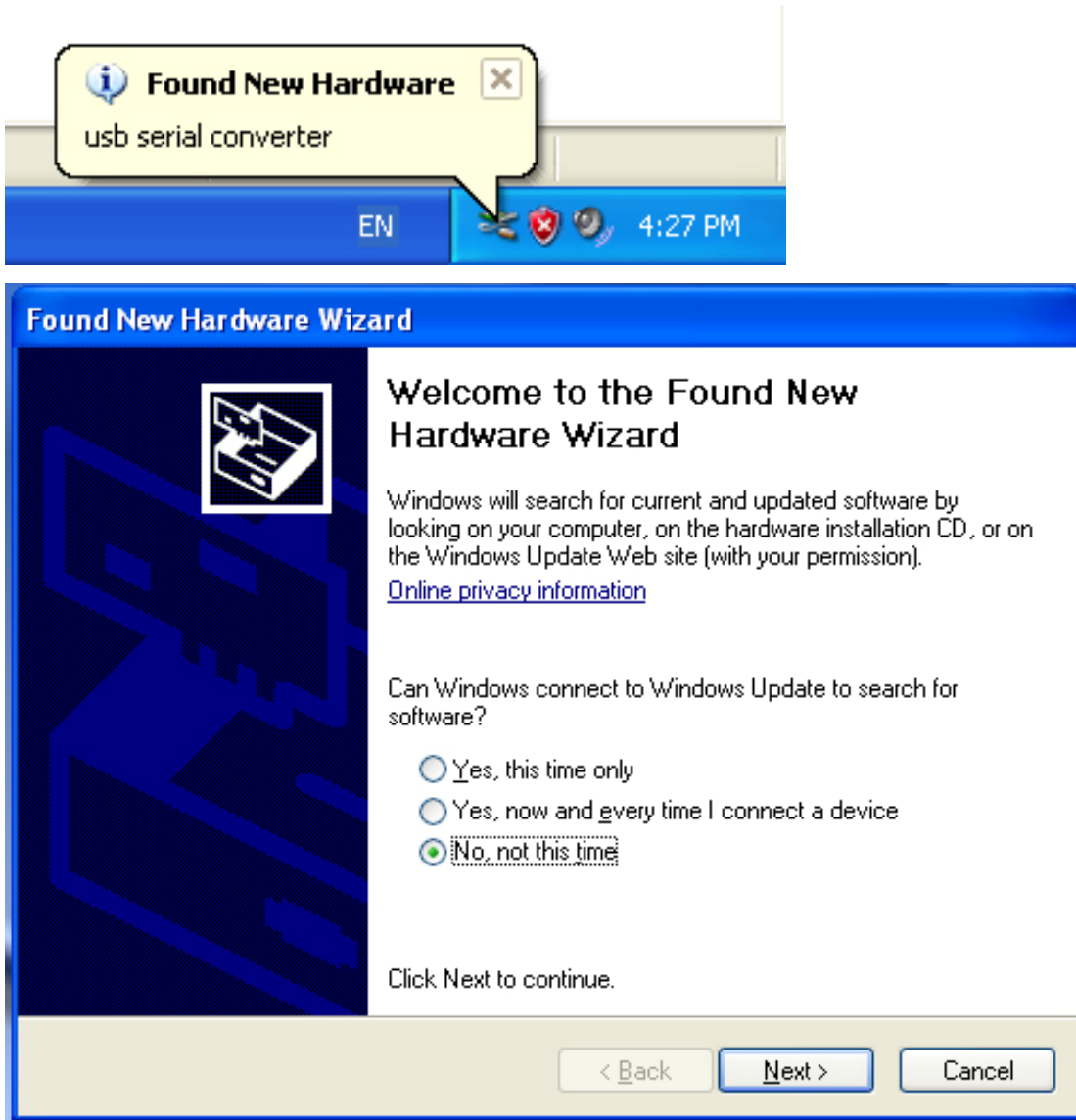


User Manual (DA-70156)

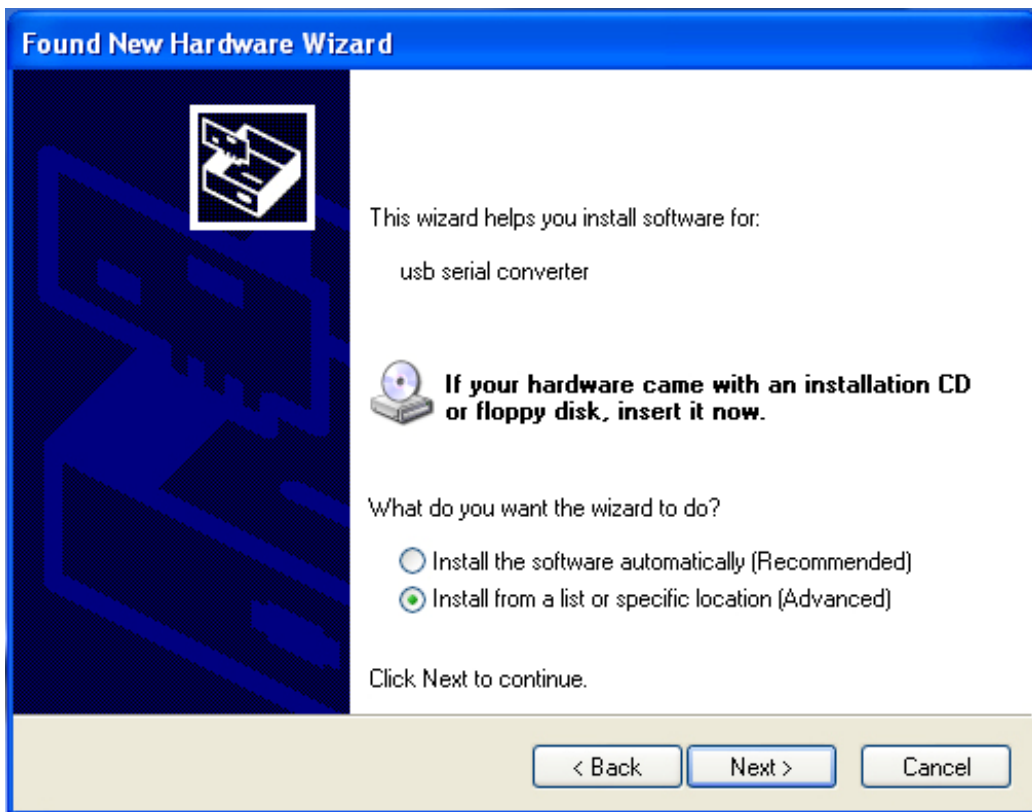
Windows XP Installation Guide

Step 1: Insert CD Driver of this product to the CD-ROM

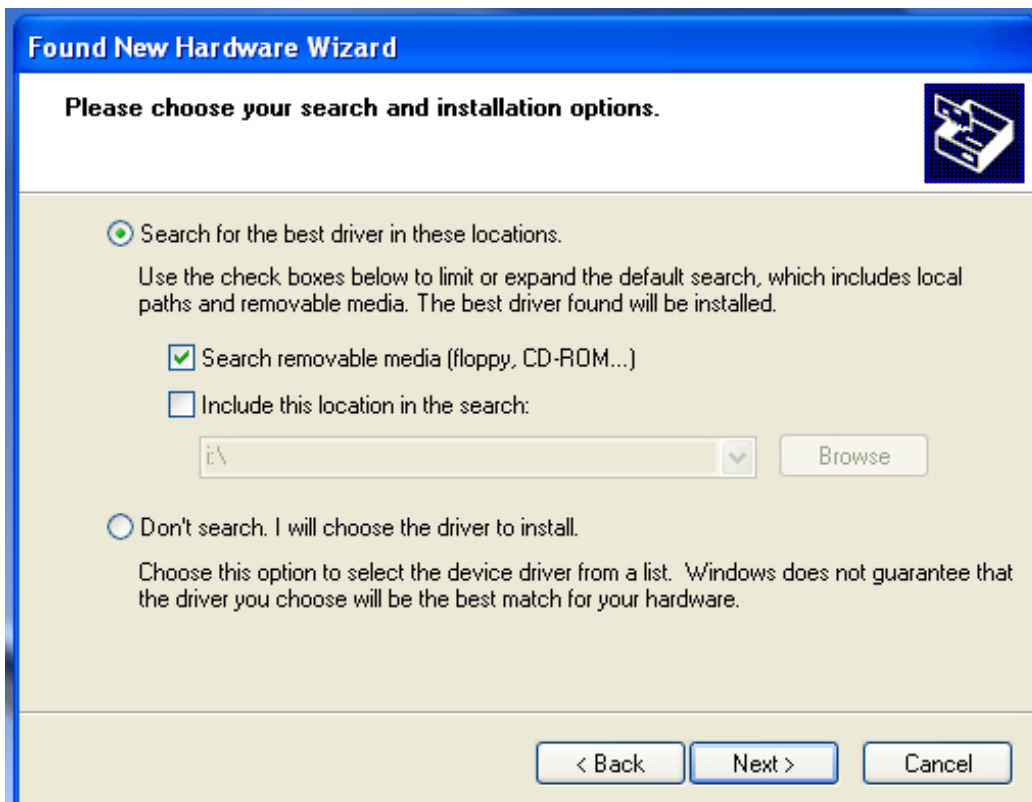
Step 2: Connect the device to a spare USB port on your PC, and find new hardware wizard, please refer to the following chart:



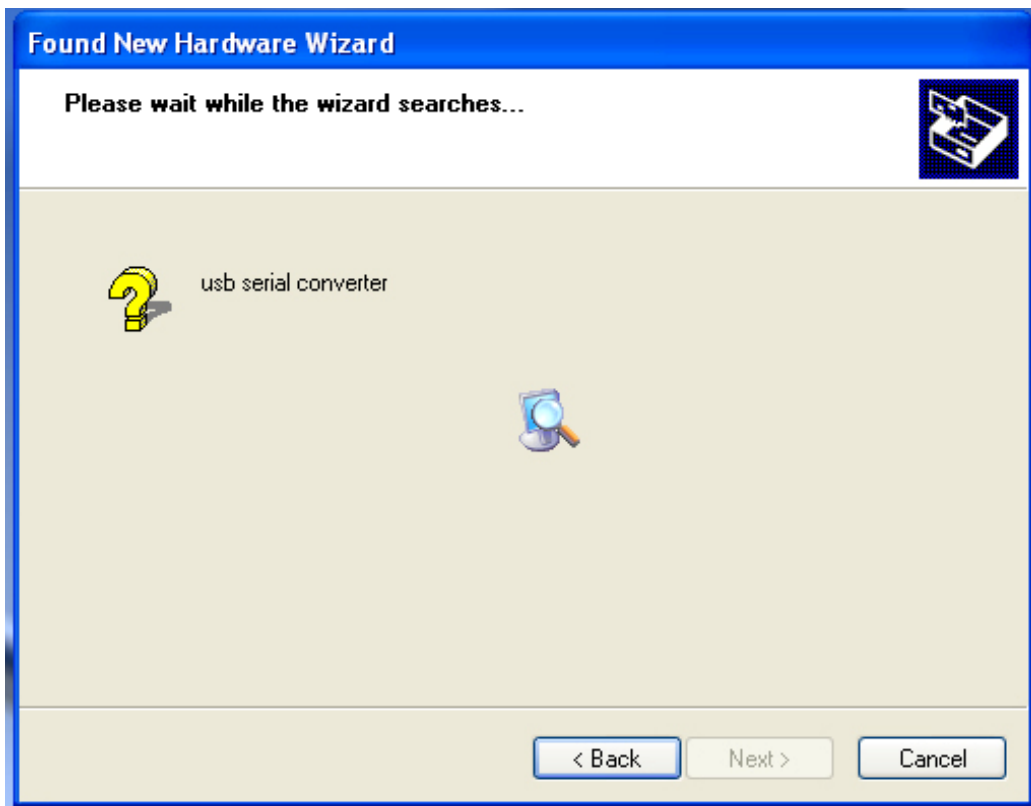
Step 3: Select “No, not this time“, click “Next” to continue.



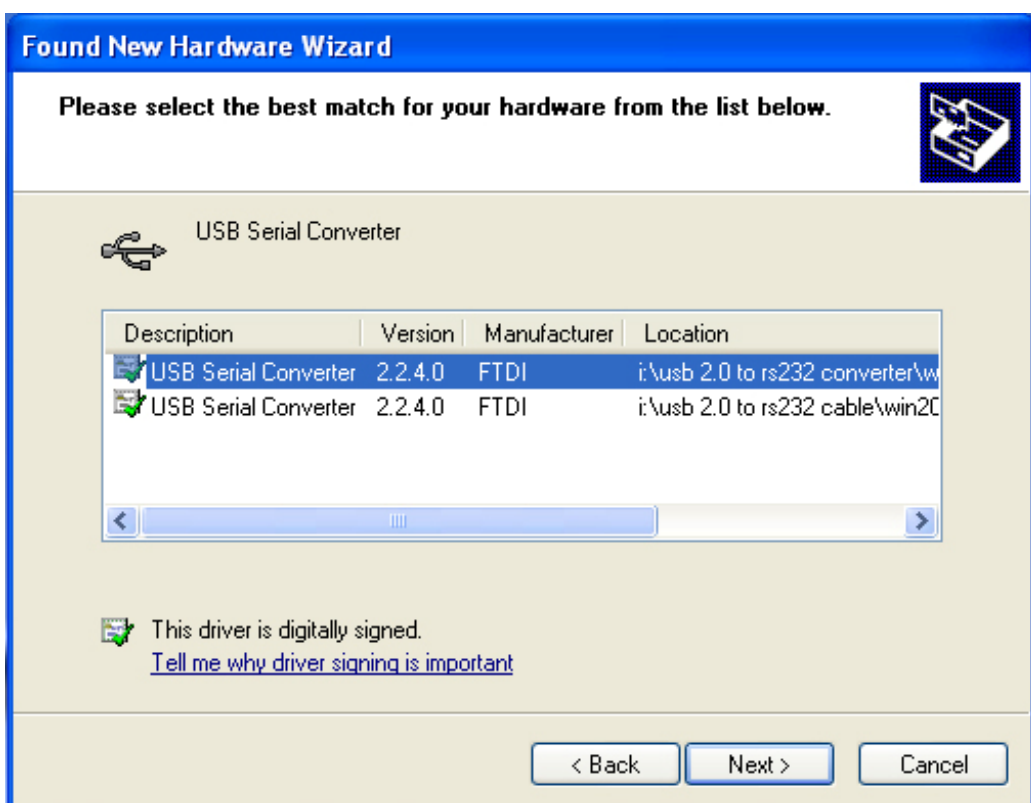
Step 4: Select “Install from a list or specific location (Advanced)”, click “Next” to continue.



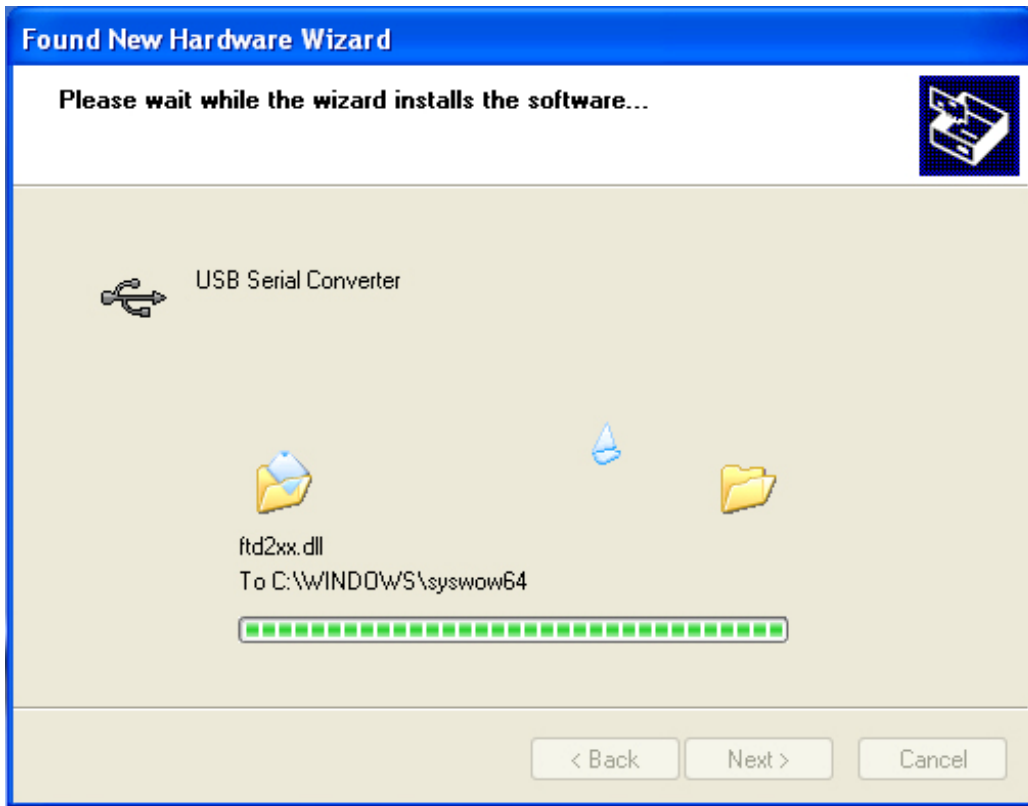
Step 5: Select “Search removable media (floppy, CD-ROD...)”, click “Next” to continue.



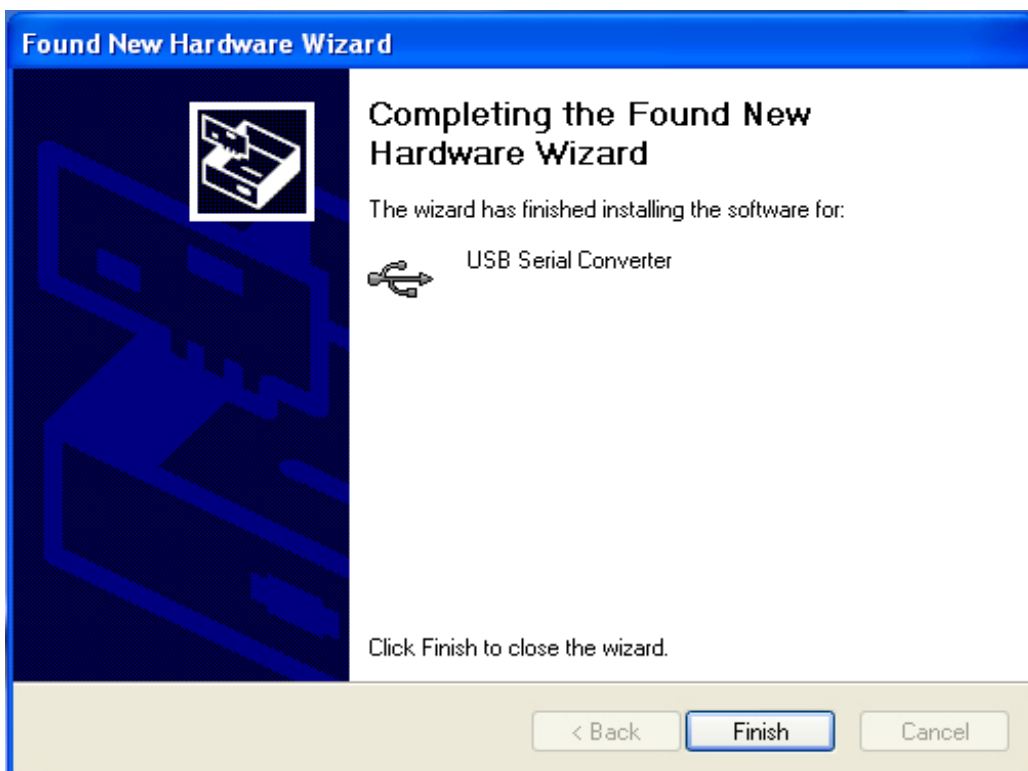
Step 6: Auto search for the corresponding driver in the CD.



Step 7: You will find two types of hardware wizard, one is for USB 2.0 TO RS232 Converter, another one is for USB 2.0 TO RS232 cable. Please choose the corresponding driver according to your product, click "Next" to continue.



Step 8: The wizard has started installation and copy file to your system



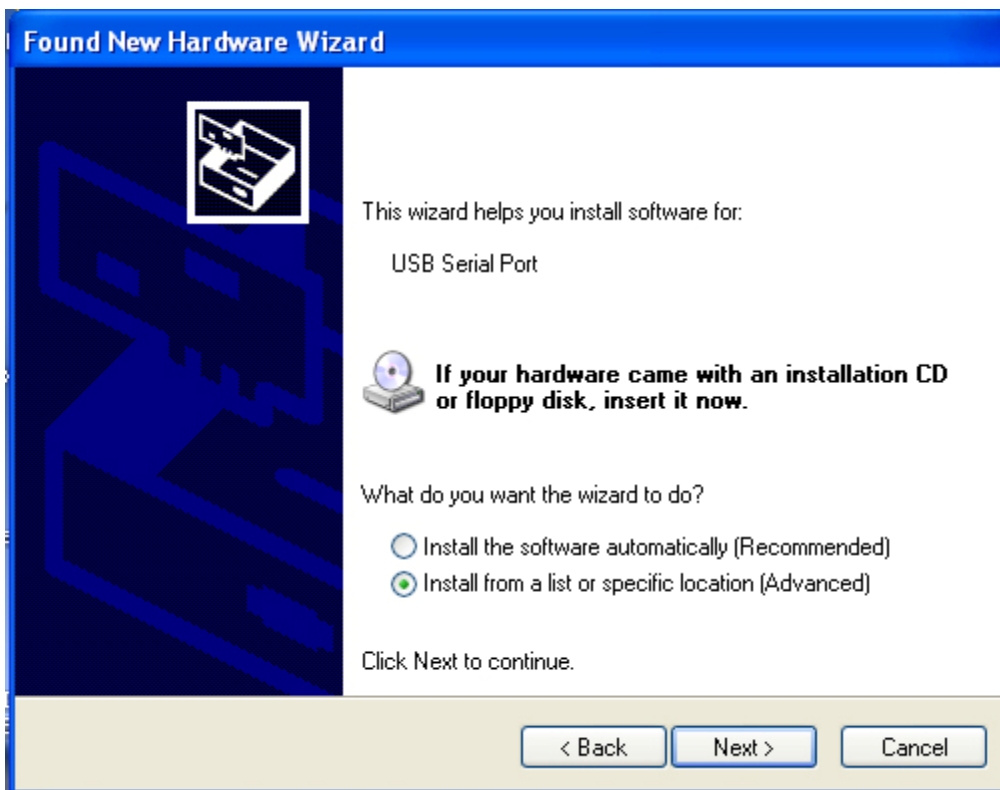
Step 9: Click “Finish” to close the wizard.



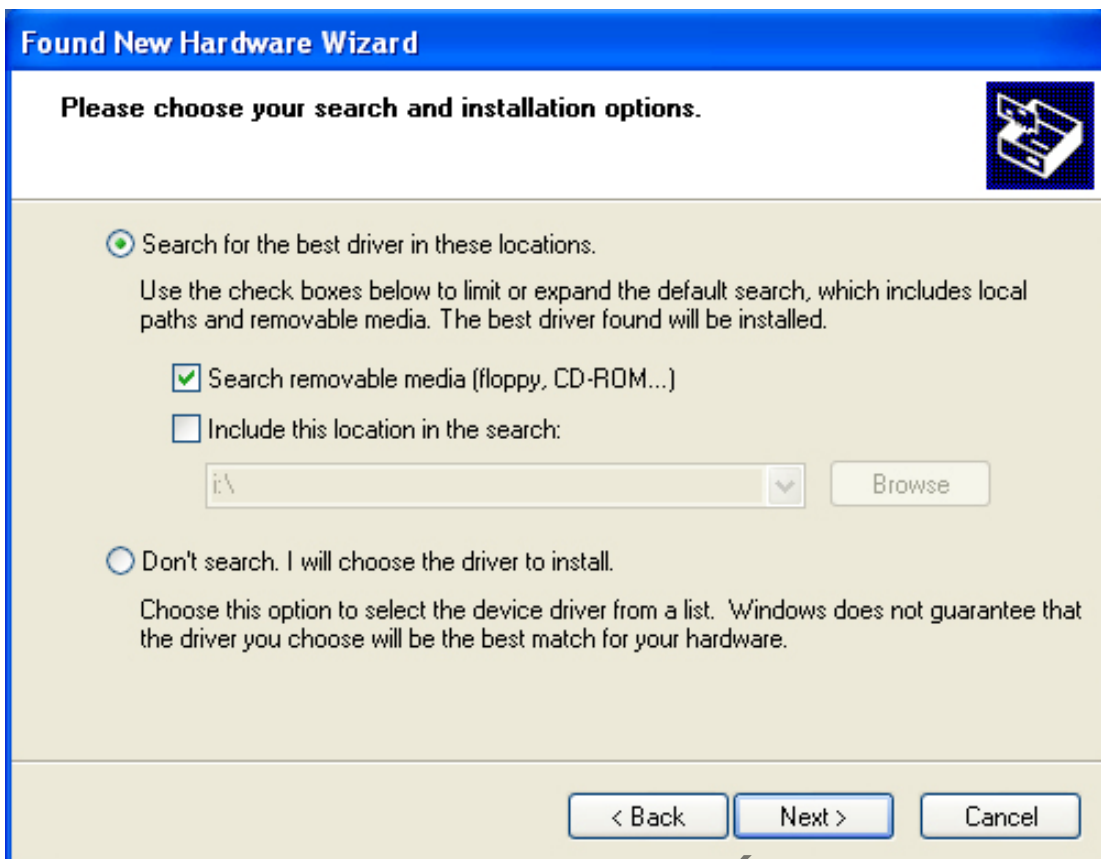
Step 10: Find new com port.



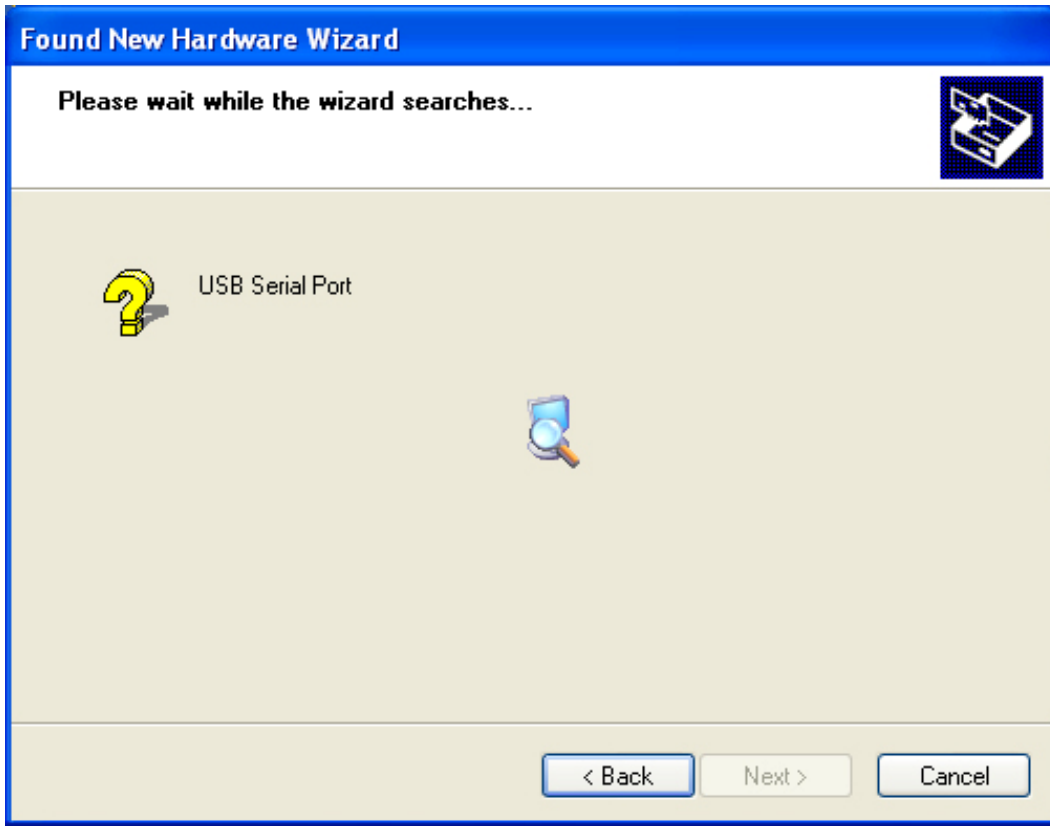
Step 11: Select “No, not this time“, click “Next” to continue.



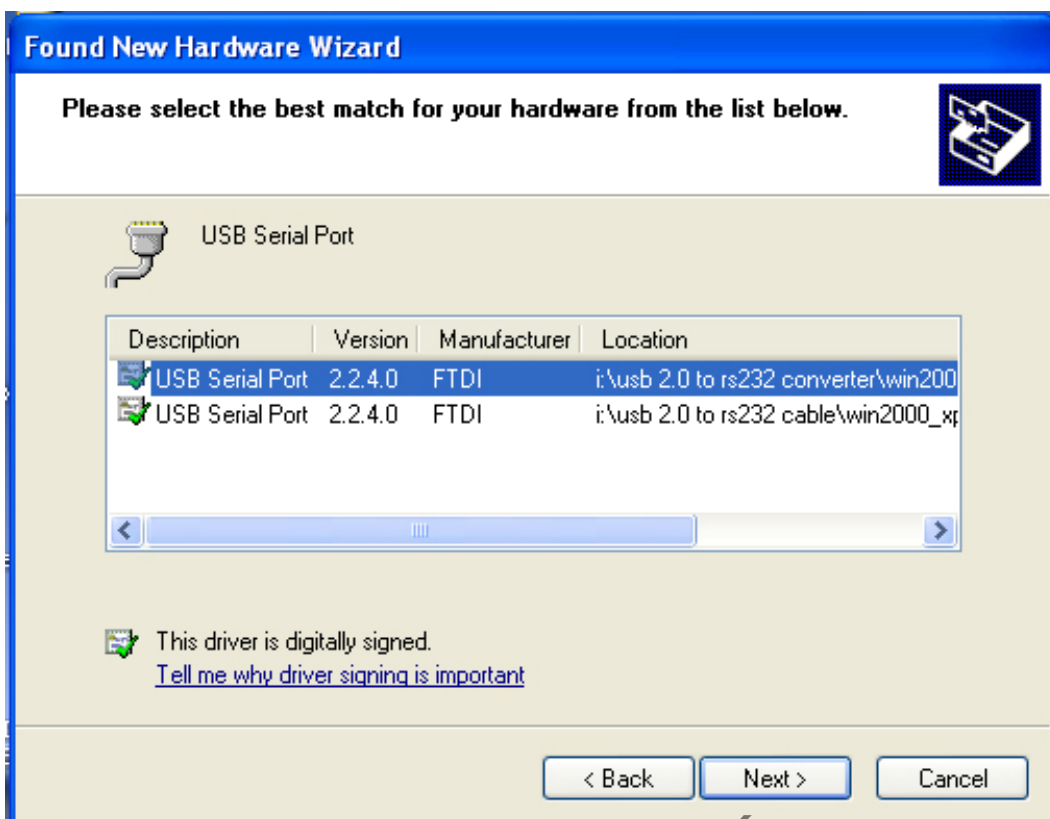
Step 12: Select “Install from a list or specific location (Advanced)“, click “Next” to continue.



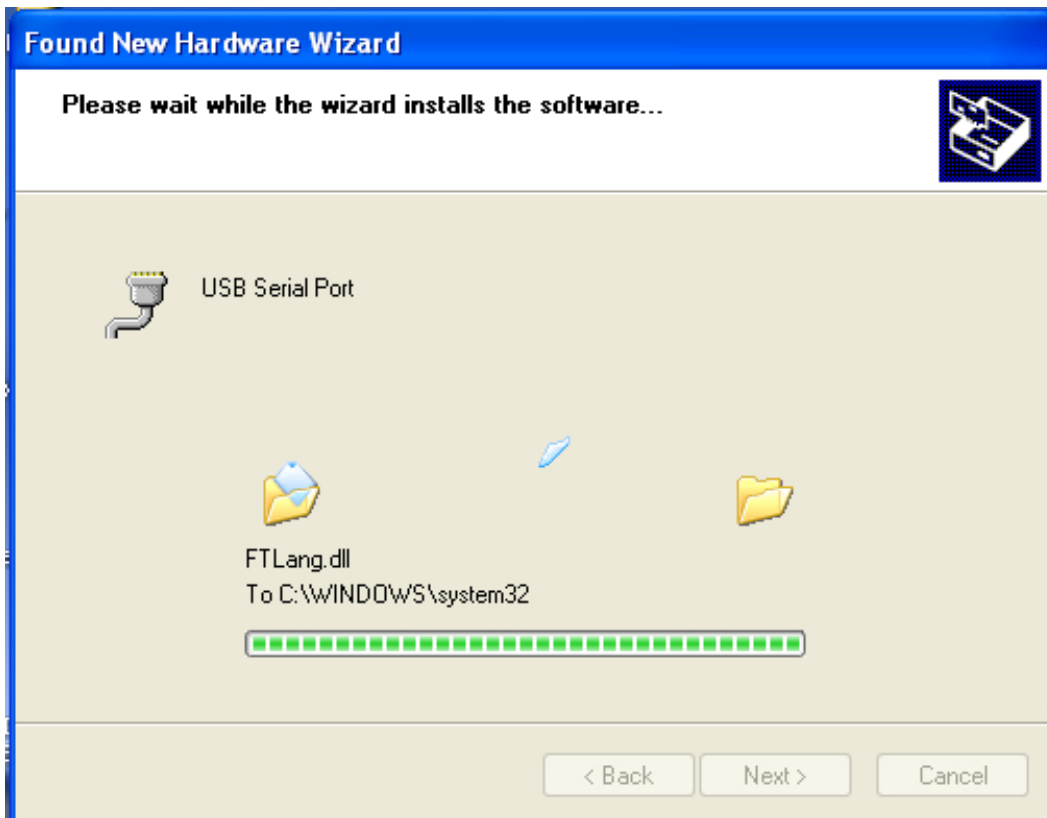
Step 13: Select “Search removable media (floppy,CD-ROM...)”,click “Next” to continue.



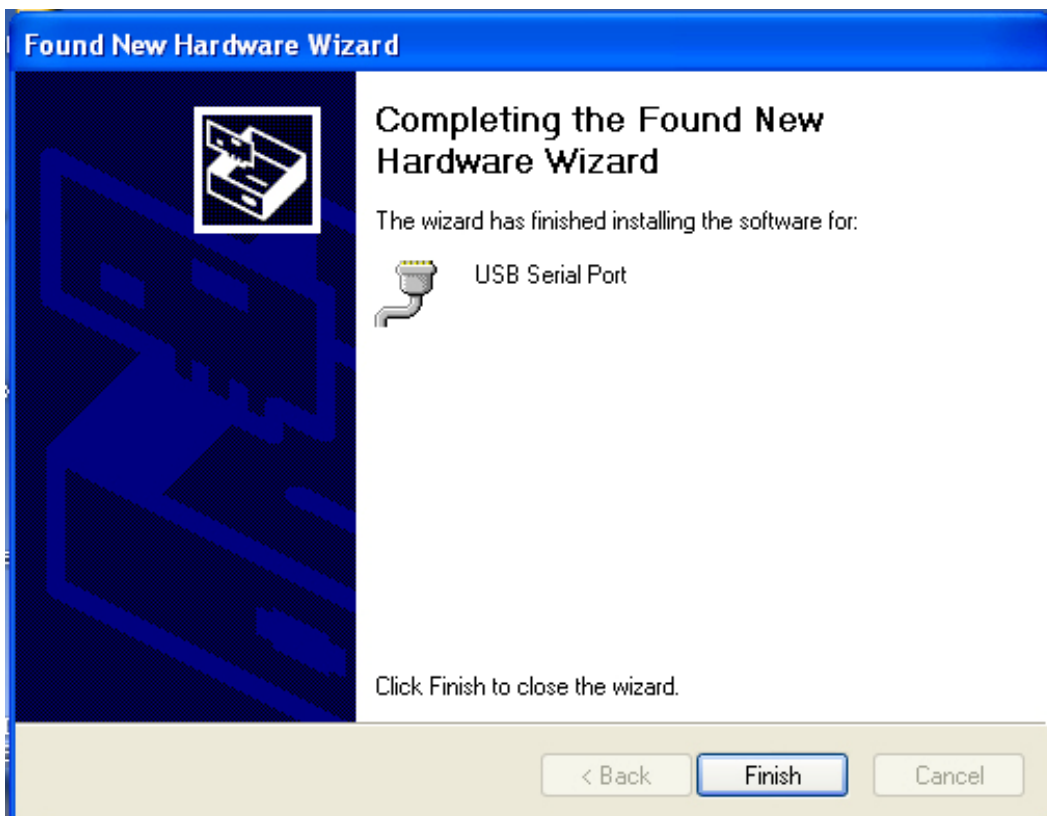
Step 14: Auto search for the corresponding driver in the CD.



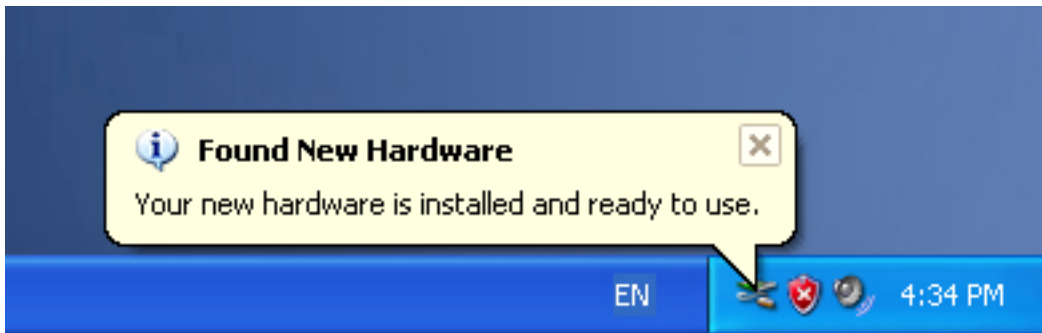
Step 15: Choose one type of the driver for your product, click “Next” to continue.



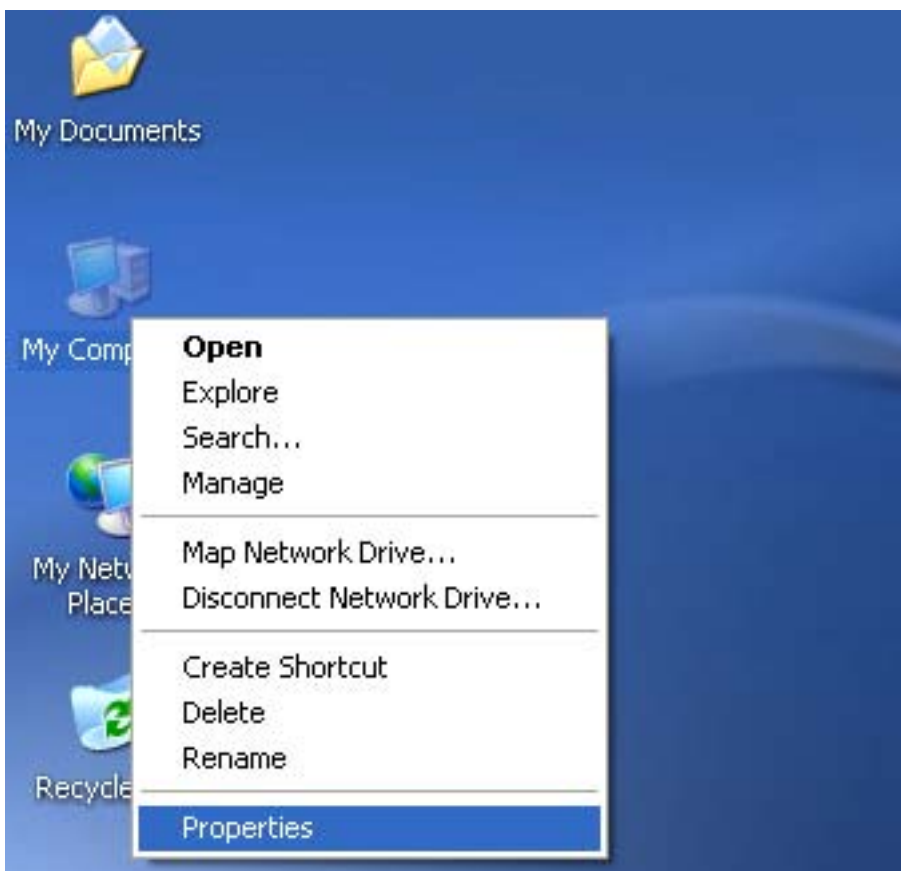
Step 16: The wizard has started installation and copy file to your system .



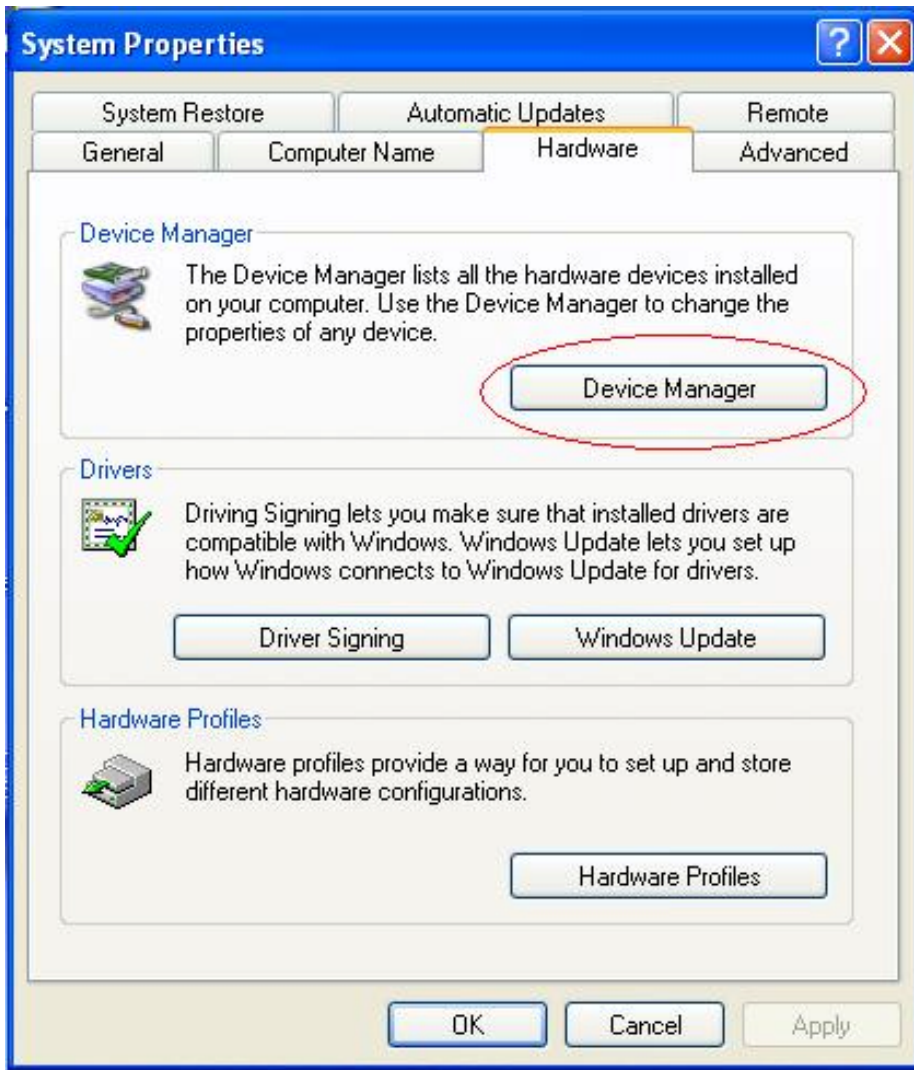
Step 17: Installation completed, click “Finish” to close the wizard.



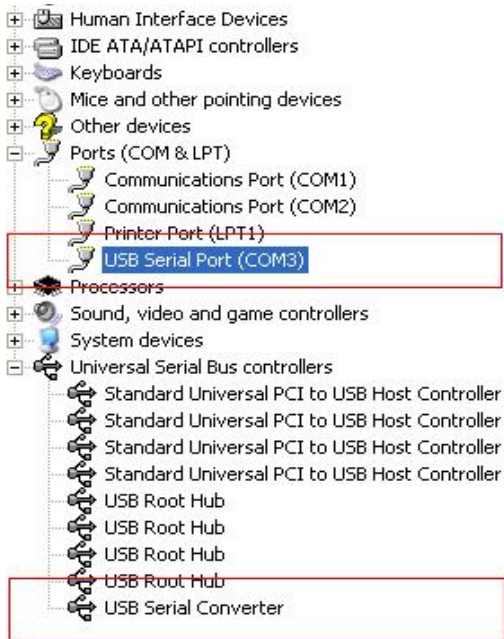
Step 18: Your new hardware is installed and ready to use.



Step 19: If you want to see it, right click “my computer”, and then click “Properties”.



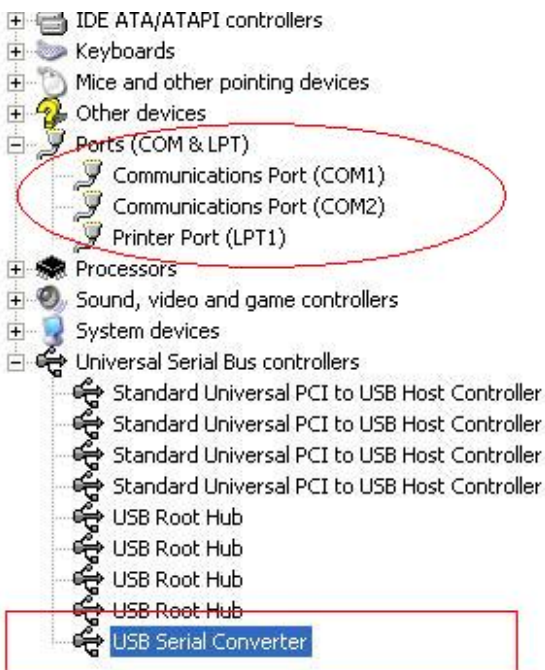
Step 20: Select “Device Manager” in the “Hardware” of the interface “System Properties”, click it, you can see the hardware devices installed on your computer, please refer to the following chart:

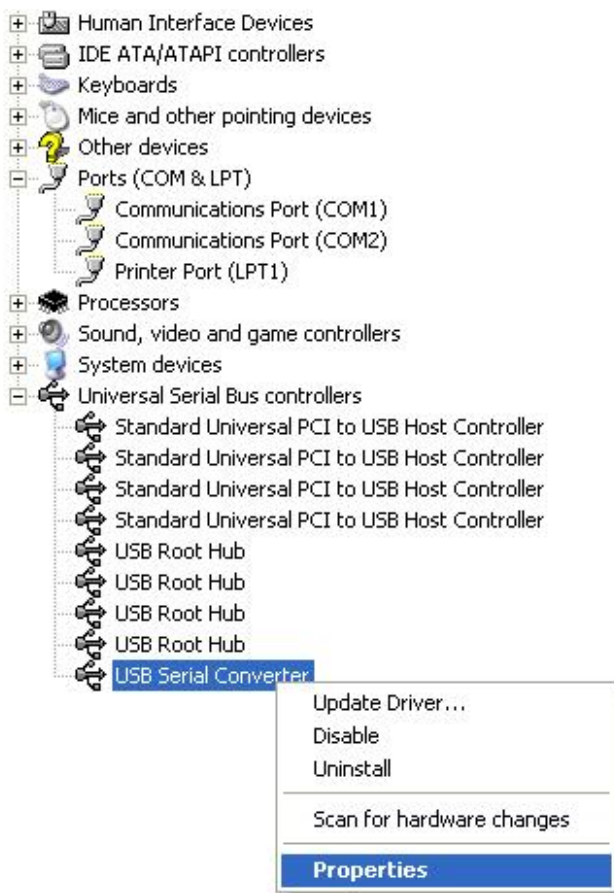


Step 21: Installation finished.

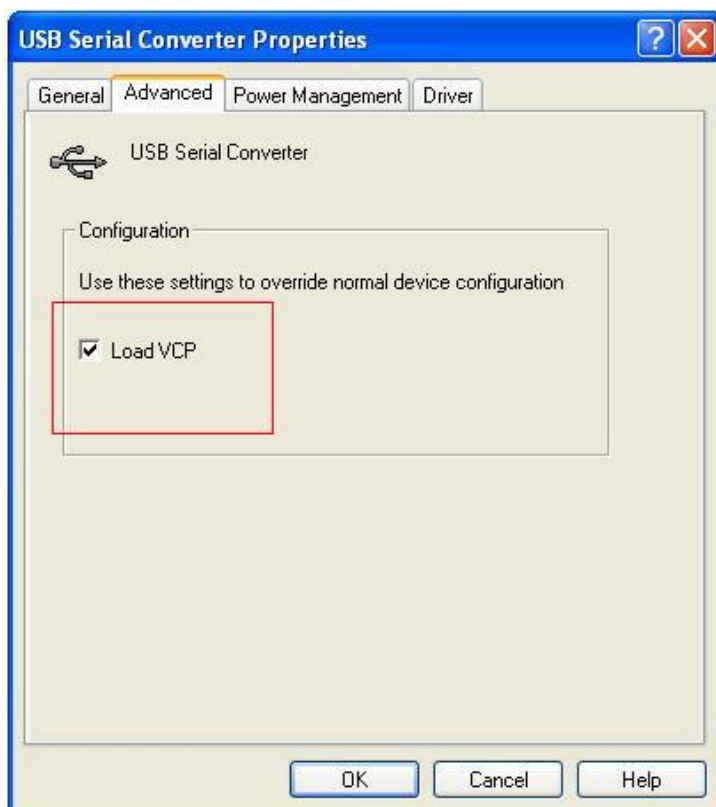
Remarks:

After installation, if you can see “USB Serial Converter” from the “Device Manager”, but can’t see “USB Serial Port (COM3)”, please continue next steps.



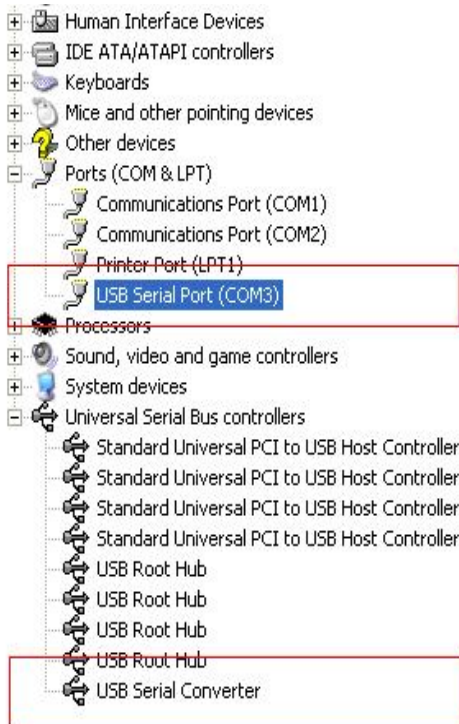


Step A: Right click “USB Serial Converter”, and then click “Properties”.



Step B: Select “Load VCP” in the “Advanced”, click “OK”.

Step C: Move out USB TO RS232 on your computer. Connect the device to an old USB port on your PC again, now it is ok, please refers to the following chart:



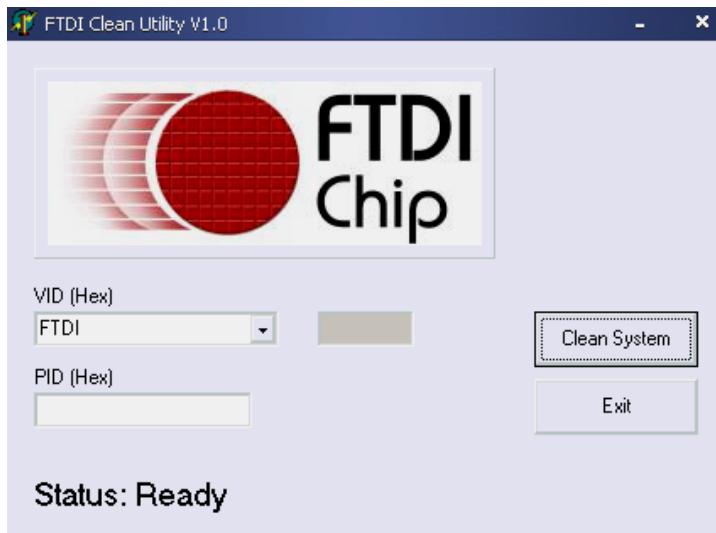
Congratulations, installation is successful.

Remove Driver

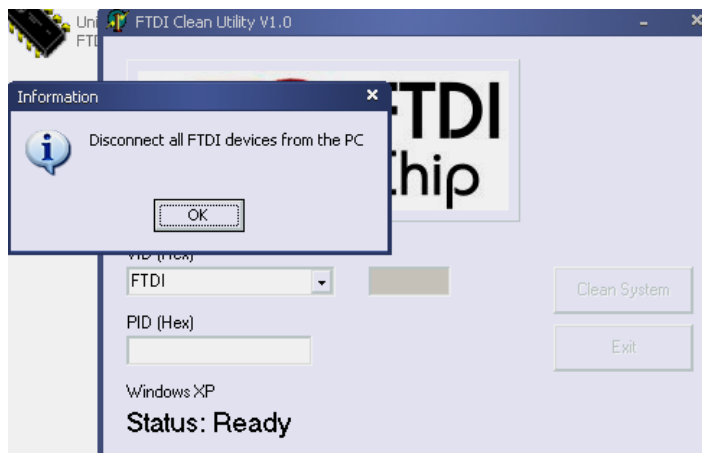
1, Open the drivers of this product, please refer to the below chart :



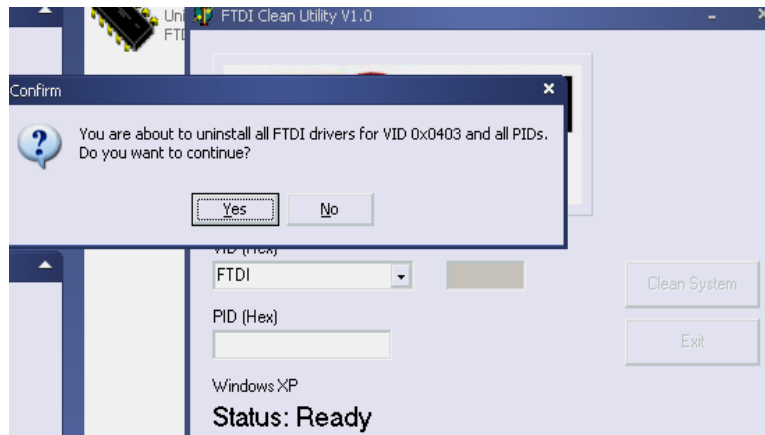
2 · Double click “FTClen.exe”, it appears the following interface



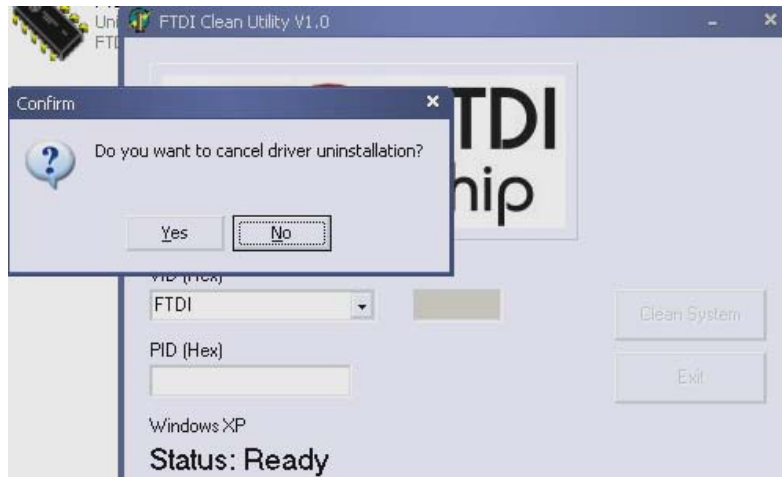
3 , click “Clean System”, it appears the following interface :



4 , Disconnect USB 2.0 To rs232 device from the pc , click “ok” it appears the following interface, then click „Yes”



5, please click “No” to uninstall driver



6, When Uninstall is completed, please click “Exit” to terminate the uninstall application.



Mac OS X Installation Guide

1 Welcome to the Mac OS X Installation Guide

This document describes the procedure for installing the Mac OS X FTDIUSBSerial driver for FTDI's FT2232C, FT232BM, FT245BM, FT8U232AM and FT8U245AM devices. The driver is available for free download from the Drivers section of the FTDI web site.

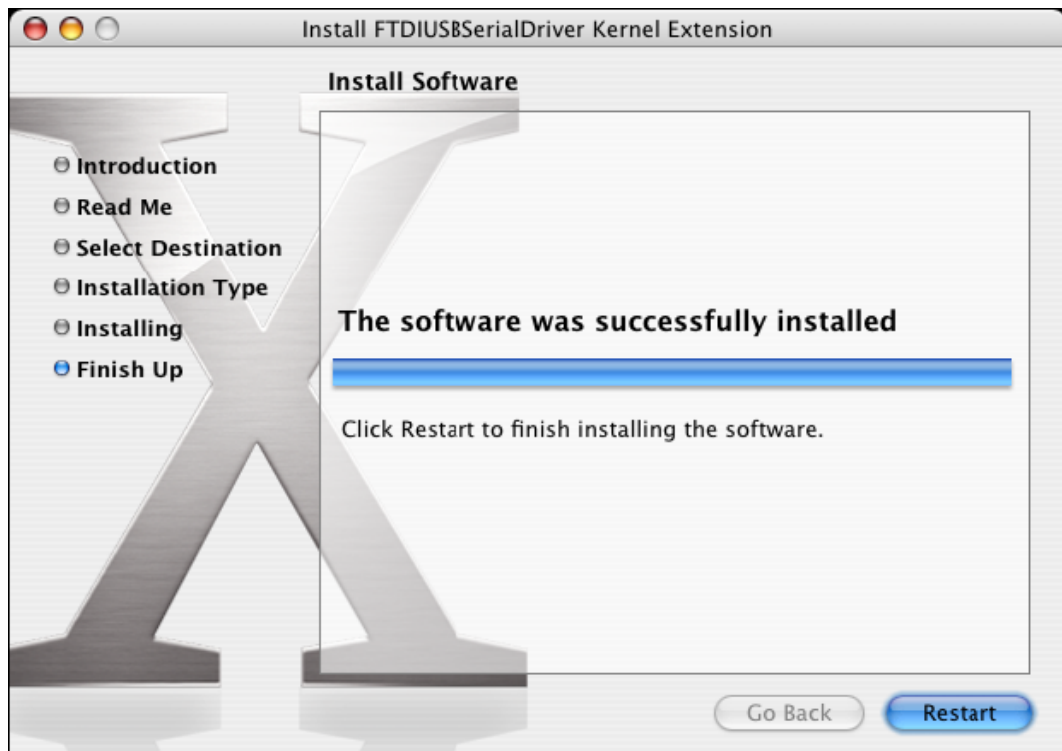
2 Installing FTDIUSBSerialDriver

Download the driver from the Drivers section of the FTDI web site and save it to the hard disk. The driver is now available in disk image (.dmg) format. Run the installer by double clicking on the FTDIUSBSerialDriver.dmg icon.



Click Continue to proceed with the installation and follow the instructions on screen.

When the installation is complete, reboot the computer.



When the computer has rebooted, plug in the device. If the device is installed properly, you will see entries in the /dev directory:

```
/dev/cu.usbserial-xxxxxxx
```

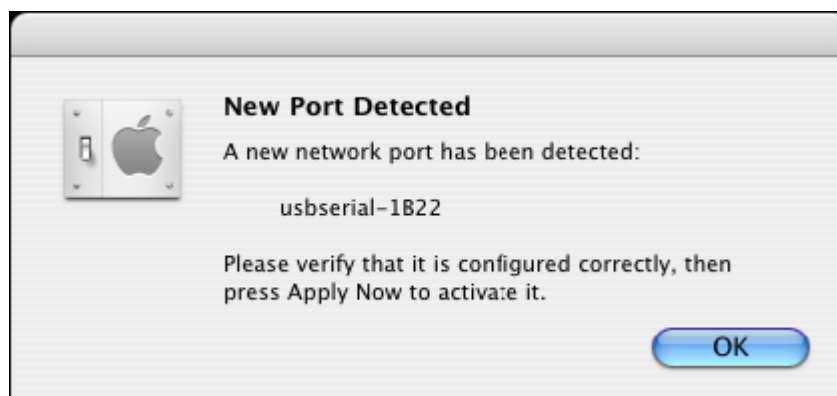
```
/dev/tty.usbserial-xxxxxxx
```

where xxxxxxxx is either the device's serial number or, for unserialized devices, a location string that depends on which USB port your device is connected to. Note that for FT232C devices port A is denoted by the serial number appended with "A" and port B is designated by the serial number appended with "B". /dev can be accessed through the Terminal application. The Terminal application can be launched by selecting Go > Applications > Utilities > Terminal. Type the following lines in the Terminal window to produce the file list:

```
cd /dev
```

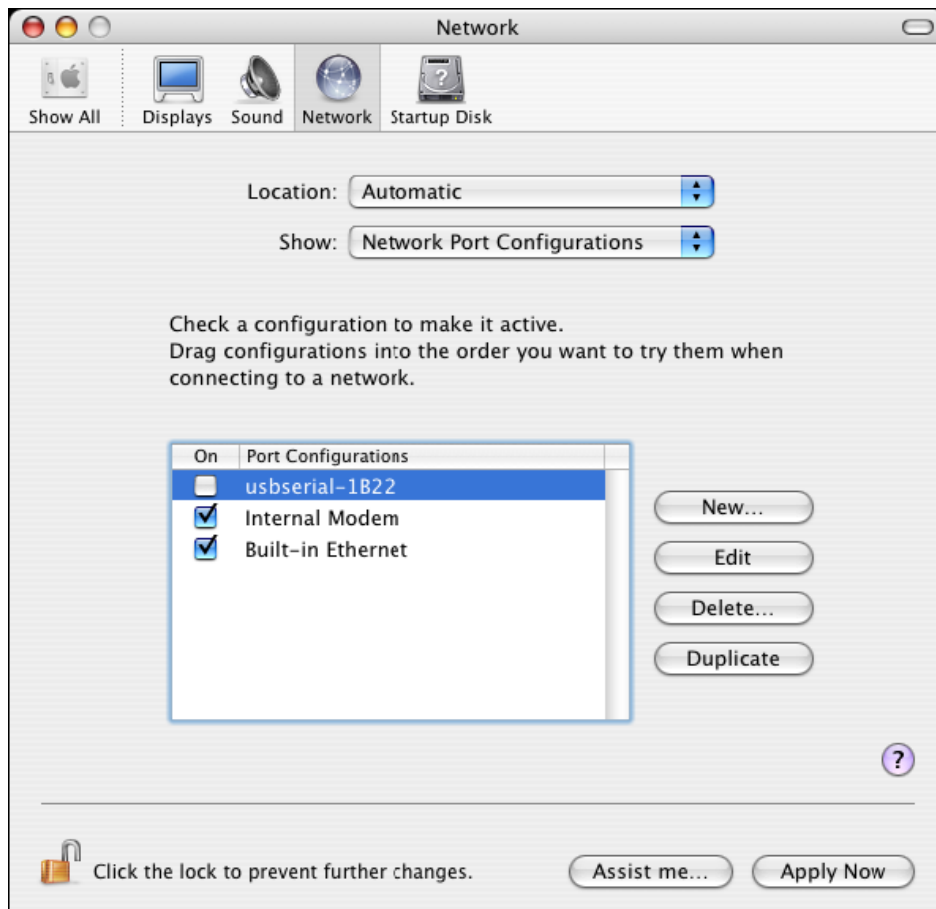
```
ls-l
```

If you run the application System Preferences and select Network (Go > Applications > System Preferences > Network), you should see the text "New Port Detected".

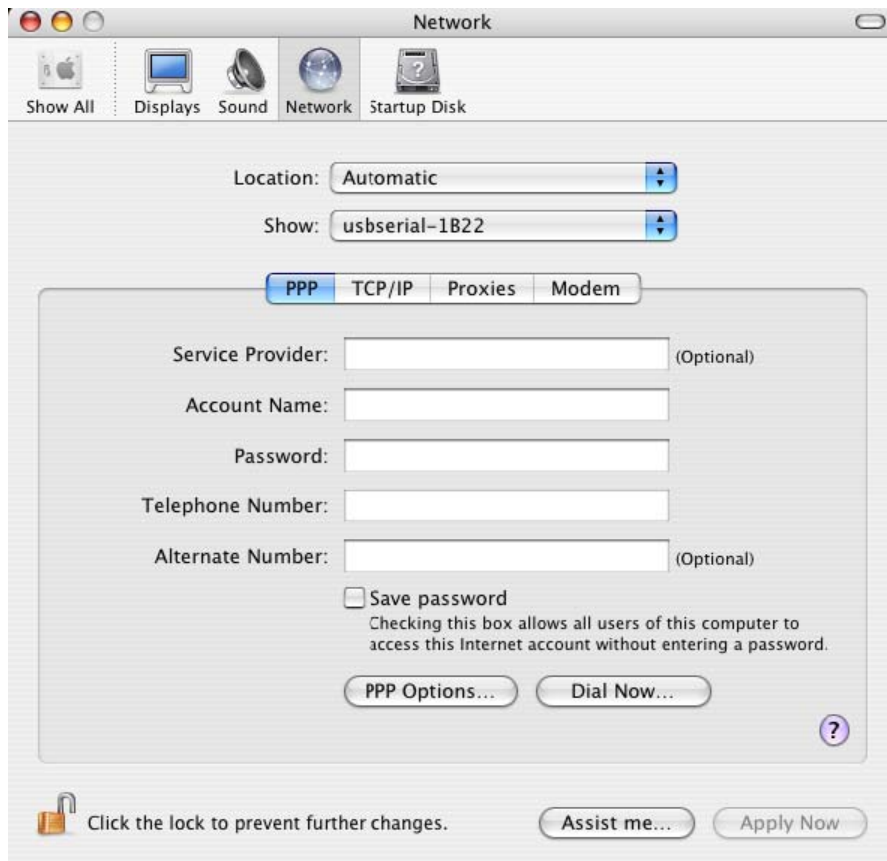


Click OK and select Network Port Configurations from the Show list. The new port can be

enabled from this screen by checking the On box and clicking Apply Now.



At this point, it is possible to exit Network and use the device as a COM port. If you wish to set the device up as a modem for an Internet connection, select the new port from the Show list to display the window below. Please note that the FT2232C device has two ports available and these must be configured separately.



Entries for this screen are specific to the Internet account for each user. If you do not know the required details, contact your Internet service provider.

3 Uninstalling FTDIUSBSerialDriver

To remove the drivers from Mac OS X, the user must be logged on as root. Root is a reserved username that has the privileges required to access all files.

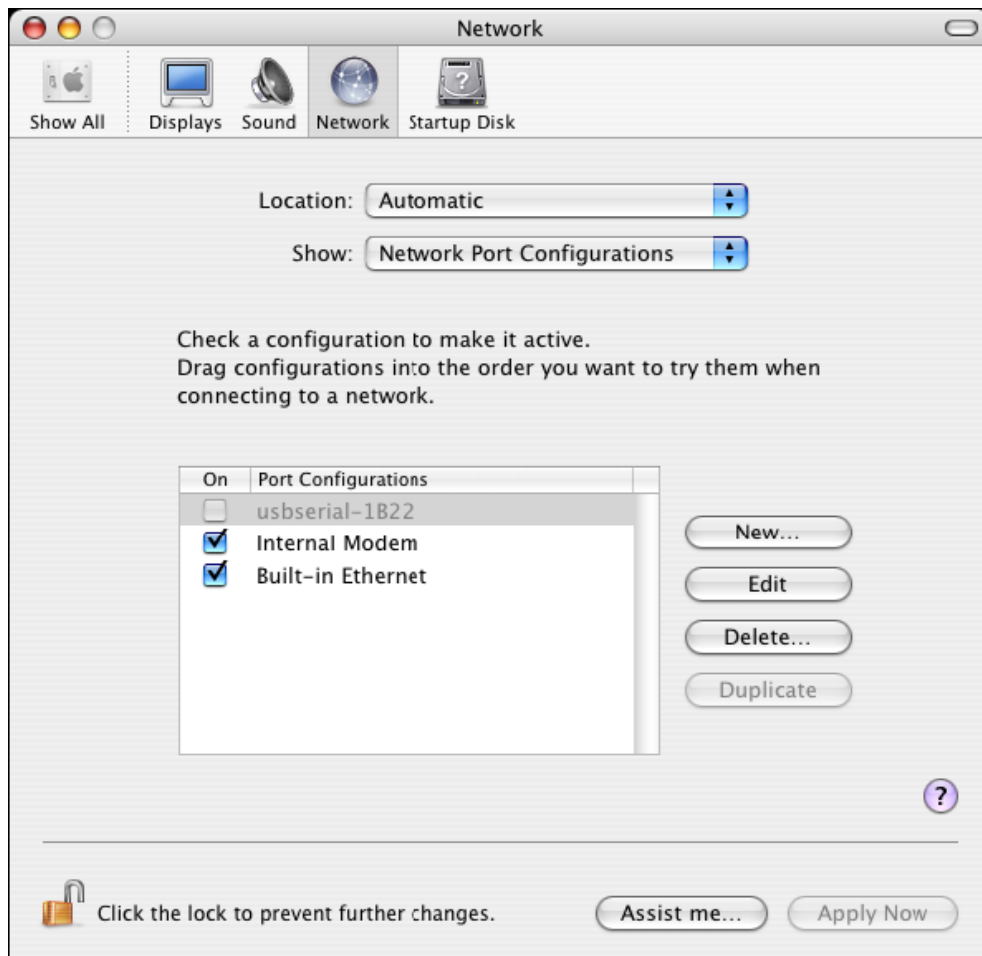
Start a Terminal session (Go > Applications > Utilities > Terminal) and enter the following commands at the command prompt:

```
cd /System/Library/Extensions  
rm -r FTDIUSBSerialDriver.kext
```

The driver will then be removed from the system.

To remove the port from the system, run the application SystemPreferences and select Network. Selecting Network Port Configurations from the Show menu will display the port as greyed out.

Select the uninstalled port and click Delete. Confirm the deletion to remove the port.



4 How do I know what my deviceID is?

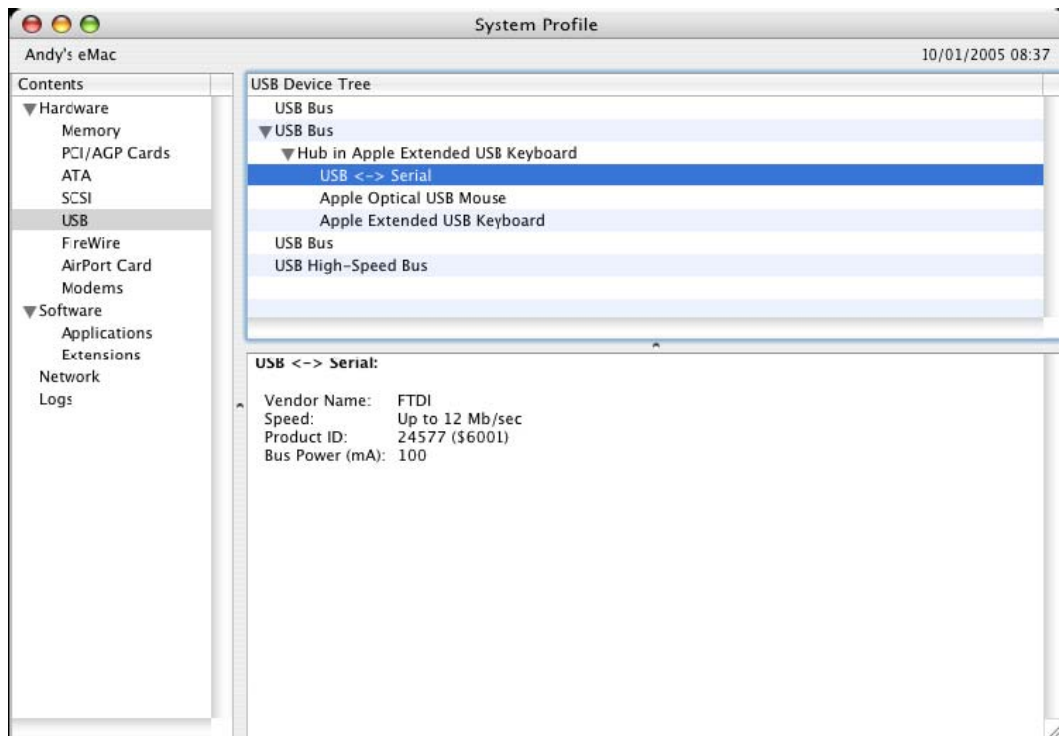
Launch the System Profiler utility, or Apple System Profiler for earlier versions of OS X. This can be accessed by going to the Finder and selecting Applications from the Go menu, then open the Utilities folder.

Select USB under Hardware in the pane to the left and then select the appropriate device from the USB Device Tree. In the screen shot below (from OS 10.3), the device has a deviceID given by:

Vendor Name: FTDI

Product ID: 24577 (\$6001)

A Vendor Name of FTDI is equivalent to a Vendor ID of 1027 (\$0403).



If the device does not work after installing the driver, it is likely to be because the PID is not supported by the driver. If this is the case, contact FTDI Support with the PID that needs to be added to the driver. If the VID is not 0x0403, it is likely that the device is not an FTDI device and we cannot support it.

Windows CE Installation Guide

1 Welcome to the Windows CE Installation Guide

The purpose of this MANUAL is to provide users of USB 2.0 To RS232 with a simple procedure for installing drivers for their devices on PDAs and targets running Windows CE 4.2 and later.

2 Installing Devices

The VCP drivers emulate a standard COM port. These can be communicated with in the same manner as any other COM port on the PC.

- ftdi_ser.dll - the VCP driver file
- FTDIPORT.inf - user changeable file to allow devices with custom VID and PID combinations to be installed
- Copy all of the unzipped files to the \\Windows directory on the PDA.
- If the PDA requires a host adaptor (e.g. USB host cable, presentation pack or Compact Flash host card), make sure that it is connected and installed **before** proceeding.
- Connect the RS232 device to a host USB port on the PDA. This will provide a dialog box to direct Windows CE to the driver files.
- Type the full name of the VCP driver file into the dialog box as shown below. If the file name is incorrect, the driver will not be found and the device will not function.
- The device installation is now complete.



- The device installation is now complete.