



ASSEMBLY INSTRUCTION

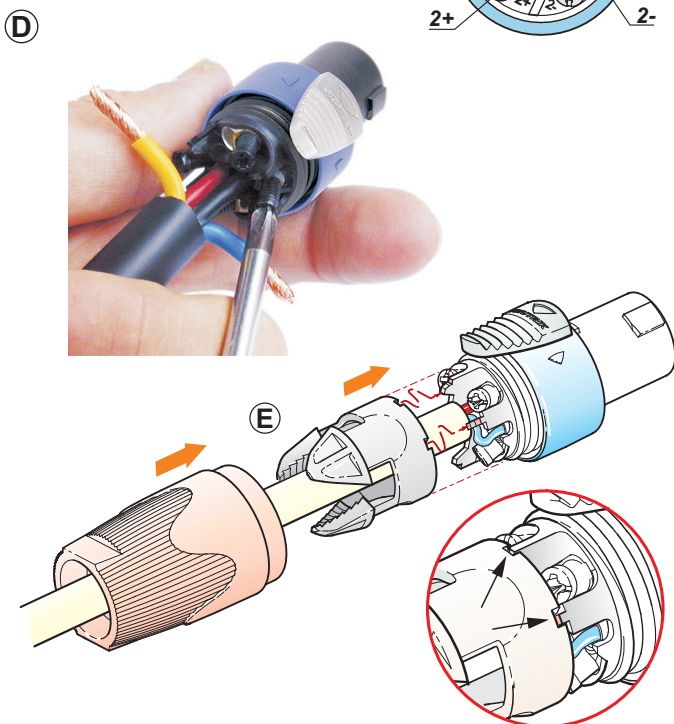
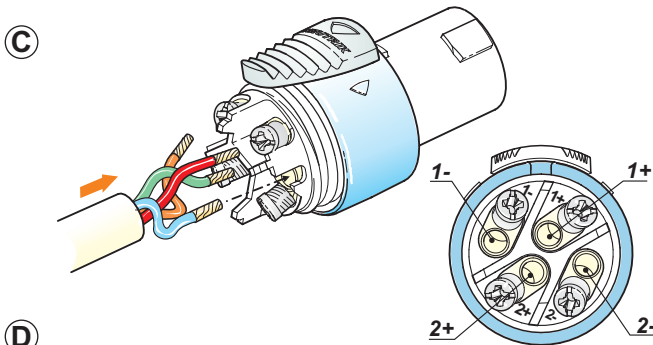
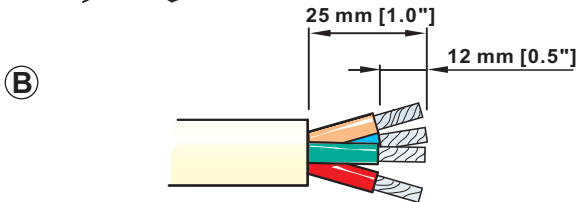
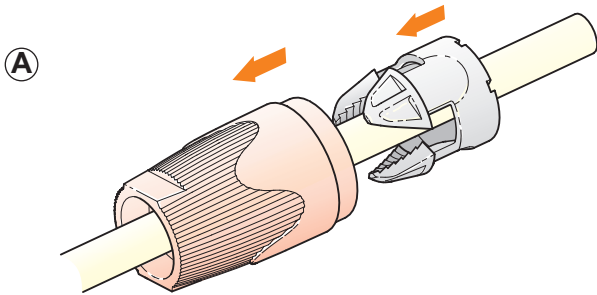
NL4FX / NL4FRX

speakON® SPX Series | Lockable Loudspeaker Connector

IMPORTANT SAFETY INSTRUCTION

Electrical Rating acc. UL & CSA:
USR: 40A/250V, CNR: 25A/250V

“CAUTION: NOT FOR INTERRUPTING CURRENT”
“ATTENTION: NE PAS UTILISER POUR COUPER LE COURANT”



Assembly of the Connector:

- Ⓐ Place bushing and chuck over cable.
- Ⓑ Prepare cable as shown.
Important is the stripping length of 25 mm and 12 mm.
- Ⓒ Insert wires into terminals and secure clamp terminals with screw driver (Pozidrive®).
- Ⓓ For easy wiring especially on big cables, first screw on the inner conctacts 1+ and 2+ and afterwards the outer contacts 1- and 2- !
- Ⓔ Push chuck up to housing .
Important: Align the chuck by positioning the nose into the recess.
- Ⓕ Tighten the bushing

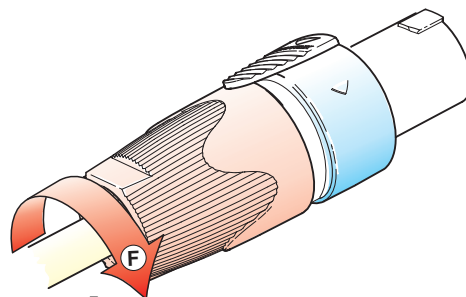
INFO to the screw driver:



DO NOT USE!

Pozidrive #1

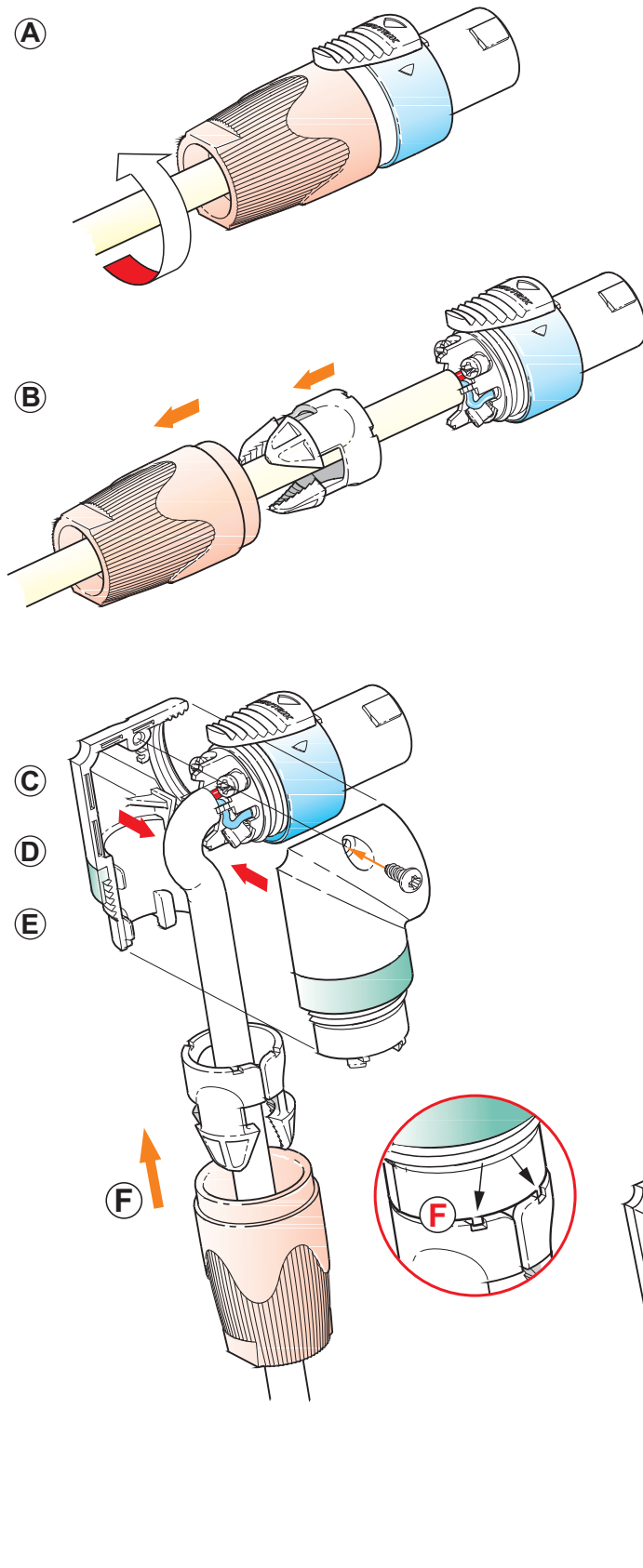
Philips



ELECTROSÓN



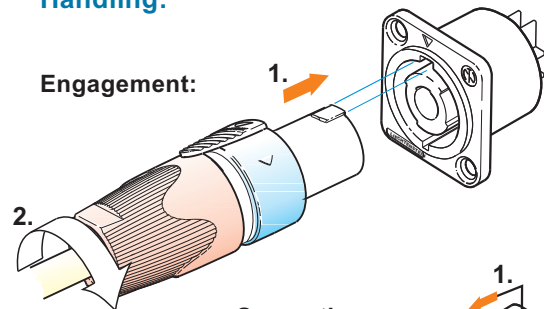
Assembly of the Conversion Kit:



- A** Open the bushing.
- B** Slide the bushing and the chuck back.
- C** Bend the cable as shown.
- D** Position the two conversion shells to fit on the connector thread.
- E** Press together and fix by screw.
- F** Slide the chuck onto the housing and fasten the bushing.
Important: Align the chuck by positioning the nose into the recess.

Handling:

Engagement:



Separation:

